

Adam Tech IDC Sockets are extremely popular, low profile, precision designed flat cable sockets that feature .100" pin to pin and row to row centerlines. These sockets quickly and easily mass terminate flat cable in one simple step. Their versatility allows them to mate with a multitude of .025" sq. post pin headers. Our superior selectively gold plated contact design provides a smooth high pressure wiping action to ensure excellent continuity. They are used with a single layer of .050" flat cable. Their small size, light weight, low cost and high density make them ideal for use in many applications.

FEATURES & SPECIFICATIONS

FEATURES:
Choice of Single or Dual beam contact design
Low Profile and High Density
Uses Single layer .050" standard Flat Cable
Quickly and easily mass terminates Flat Cable
Smooth High Pressure Wiping Contacts

MATING CONNECTORS:
Adam Tech .100" BHR series box headers and PH2 series pin headers

PACKAGING:
Anti-ESD plastic trays

APPROVALS AND CERTIFICATIONS:
UL Recognized File no. E224053

SPECIFICATIONS:

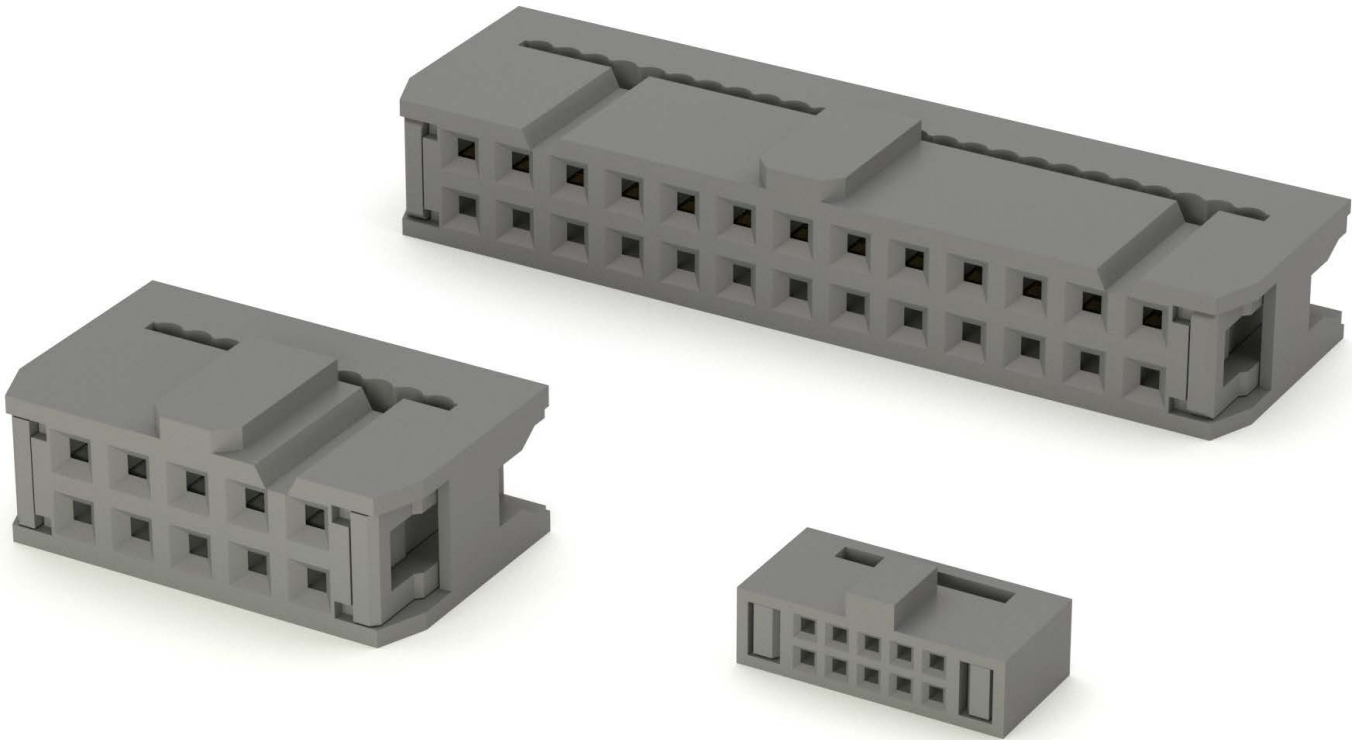
Material:
Insulator: PBT, glass reinforced, rated UL94V-0
Insulator Color: Black
Contacts: Phosphor Bronze

Contact Plating:
Gold flash over nickel underplate on contact area, tin over copper underplate on IDC area

Electrical:
Operating voltage: 250V AC max.
Current rating: 1 Amp max.
Contact resistance: 30 mΩ max. initial
Insulation resistance: 1000 MΩ min.
Dielectric withstanding voltage: 500V AC for 1 minute

Mechanical:
Insertion force: FCS-D2: 0.5 lbs per contact max.
Withdrawal force: FCS-D2: 0.094 lbs per contact min.
Recommended wire size: 28 Awg stranded
Cable retention: 28 lbs. min axial force per inch.
Mating durability: 500 cycles min.

Temperature Rating:
Operating temperature: -40°C to +105°C



PART NUMBER	STRAIN RELIEF	CENTERLINE	CONTACT STYLE	POSITIONS	PLATING	PRODUCT DATA
2FCS-B-XX-SG-PB		.079" [2.00mm]		06-68	Selective Gold	View
2FCS-C-XX-SG-PB		.079" [2.00mm]		06-68	Selective Gold	View
2FCS-C-XX-SG-PB-SR		.079" [2.00mm]		06-68	Selective Gold	View
2FCS-C1-XX-SG-PB-FSR	Yes	.079" [2.00mm]	Dual Wipe Contacts	06-64	Selective Gold	View
2FCS-D-XX-SG-PB-15		.079" [2.00mm]		06-68	Selective Gold	View
2FCS-XX-SG		.079" [2.00mm]		06-68	Selective Gold	View
2FCS-XX-SG-PB		.079" [2.00mm]		06-68	Selective Gold	View
2FCS-XX-SG-PB-30		.079" [2.00mm]		06-68	Selective Gold	View
2FCS-XX-SG-PB-A		.079" [2.00mm]	4 Wipe Contacts	06-68	Selective Gold	View
2FSR-XX	Yes			06-68		View
FCS-C1-XX-G		.100" [2.54mm]	Single Wipe Contacts	06-64	Gold	View
FCS-D2-XX-SG		.100" [2.54mm]	Dual Wipe Contacts	06-64	Selective Gold	View
FCS-D2C1-XX-SG-FSR	Yes	.100" [2.54mm]	Dual Wipe Contacts	06-64	Selective Gold	View
FCS-XX-SG		.100" [2.54mm]	Single Wipe Contacts	06-68	Selective Gold	View
FSR-XX	Yes			06-64		View
HFCS-A-XX-SG		.050" x .050"		06-68	Selective Gold	View
HFCS-A1-XX-G		.050" x .050"		06-80	Gold	View
HFCS-XX-SG		.050" x .100"		06-68	Selective Gold	View

IDC SOCKETS PART NUMBER CONFIGURATION					
FCS	-	06	- SG -		30
SERIES	POSITIONS			PLATING	OPTIONS:
HFCS = .050" (1.27x2.54mm) Flat Cable Low profile IDC Socket HFCS-A = .050" (1.27x1.27mm) Flat Cable Low profile IDC Socket .050"x.050" 2FCS = .078" (2.00mm) Flat Cable IDC Socket FCS = Flat Cable IDC Socket with standard single wipe contacts FCS-D2 = Flat cable IDC socket with dual wipe contacts	HFCS Series: 10, 14, 16, 20, 22, 26, 30, 34, 40, 44, 50, 60, 68, 80, 100 HFCS-A Series: 6 thru 26, 30, 34, 40, 50, 60, 80 2FCS Series: 6 thru 34, 36, 40, 44, 50, 60, 62, 64, 68 FCS Series: 06, 08, 10, 12, 14, 16, 20, 24, 26, 30, 34, 40, 44, 50, 56, 60, 62, 64			SG = Selective gold plating	Add designator(s) to end of part number N = No polarization bump STRAIN RELIEF: FSR-XX (XX = No. of Positions) PULL TABS: PT-XX (No. of positions) KEYING PLUGS: FCS-K (Key plugs can also be molded into connector, consult factory)