

■ Main features

- 200A Contact switching capability
- It has two sets of contact conversion forms
- Coil power consumption is: 14 ~ 17W Min ~ Max
- Scope of application: The product is mainly used in automobile winch and electric winch to control the forward and reverse rotation of motor
- technical specifications: GB/T14048.4-2020



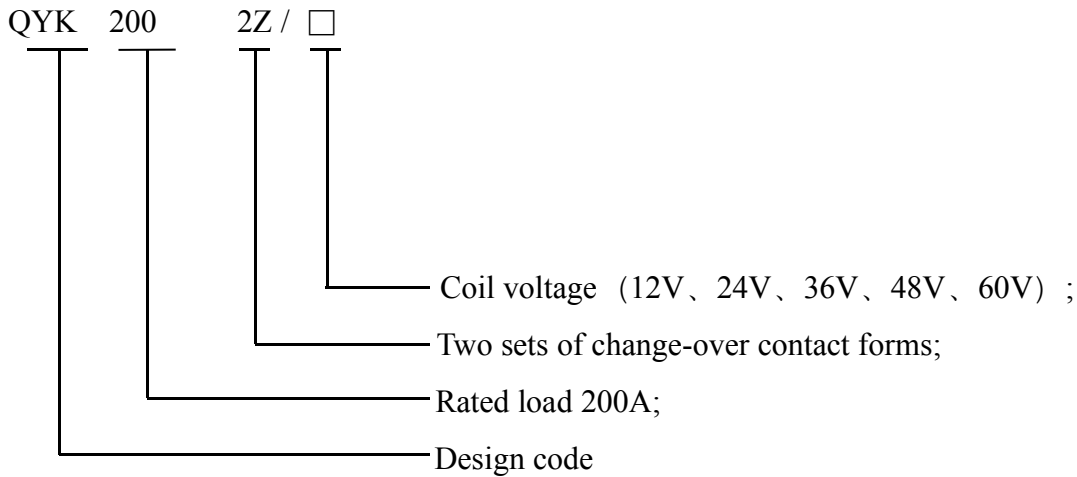
■ performance parameter

model	QYK200-2Z/□
contact form	Two group conversion
Contact material	Silver alloy
Contact load (resistive load)	200A 12VDC 200A 250VAC
Withstand overload current	560A/10S
Coil rated voltage	12、24、36、48、60 (etc)
contact resistance	Max. 20mΩ (initial)
insulation resistance	Min. 100MΩ at 500VDC
Dielectric Strength	1000VAC 50 HZ/60 HZ (1 minute) Leakage current less than 1mA
Pull in time	Max. 50mS
Release time	Max. 50mS
pull-in voltage (DC V)	≤ 70% U _s
Release voltage (DC V)	5 ~ 30% U _s
Operating ambient temperature	-25°C ~ +60°C
Storage temperature	-40°C ~ +65°C
relative humidity	20%~90% RH
Mechanical life	≥ 200000 次
class of pollution	III
Working system	Short time working system
Vibration	(10 ~ 200) Hz acceleration ≤ 3.5g
to attack	(60) Times / minute acceleration 6g
Installation direction	Contact up and horizontal position

■ Coil parameters

model	Coil voltage (V)	Coil operating voltage (V)	pull-in voltage (V)	Release voltage (V)	Starting current (A)	power waste (W)
QYK200-2Z/□	12	0.85U _s ~ 1.1U _s	≤ 70%	5 ~ 30%	≤ 1.4	10 ~ 25
	24				≤ 0.9	10 ~ 25
	36				≤ 0.6	10 ~ 25
	48				≤ 0.4	10 ~ 25
	60				≤ 0.3	10 ~ 25

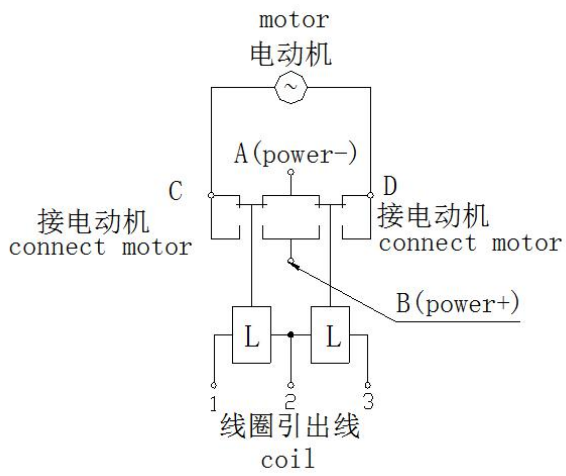
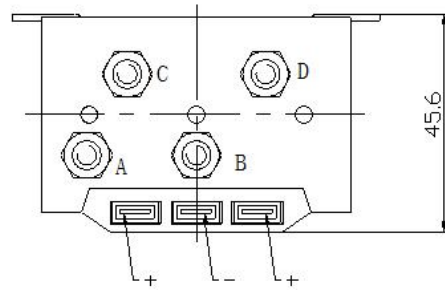
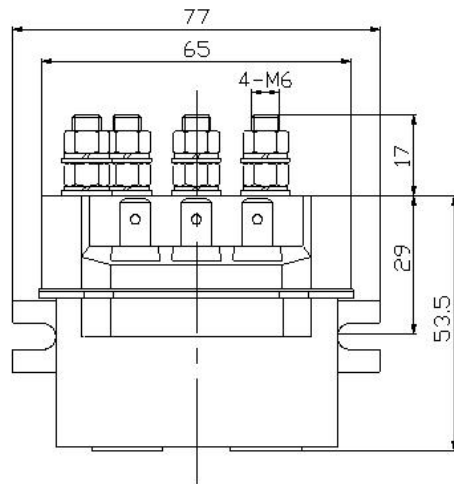
■ Interpretation of product model



example: QYK200-2Z/24; Indicates: DC contactor with two groups of change-over contact forms, load current of 200A and coil voltage of DC24V .

■ Outline installation dimensions and schematic diagram of positive and negative transfer lines of control motor

QYK200-2Z/□



ZWK200-2Z/□

Dimension (mm)	Tolerance grade not noted (mm)
0 ~ 30	± 0.3
30 ~ 60	± 0.5
60 ~ 100	± 1
> 100	± 2