

ELECTRET CONDENSER MICROPHONE UNITS

MODEL ECM-60 C

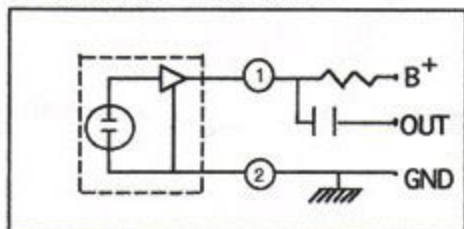
OMNI DIRCTIONAL

1. SENSITIVITY

($O_{DB}=1V/\mu\text{ bar}$, 1KHZ,
 $V_{CC}=4.5V$, $R_L=1K\ \Omega$)

C:-64+/-3DB

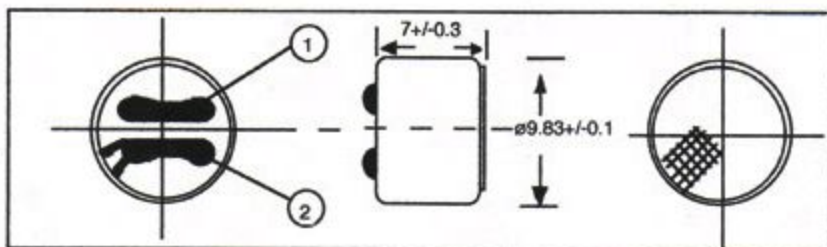
2. CIRCUIT DIAGRAM



3. SPECIFICATIONS

1. IMPEDANCE: LOW
2. STANDARD VOLTAGE: 4.5 V
3. OPERATING VOLTAGE: 1.5V TO 10 V
4. CURRENT DRAIN: 0.5mA Max
5. S/N RATIO: 40 db or more
6. MAXIMUM INPUT SOUND PRESSURE: 120 db SPL

4. DIMENSION(MM)



5. TYPICAL FREQUENCY RESPONSE CURVE

