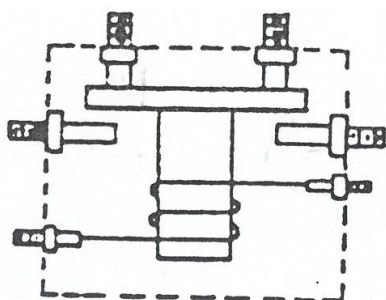


Technical Information Sheet

Part No. 0-335-57

Changeover/Reversing Solenoid

Isolated Return. Rated at 50A at 24V



Specification

Type	Changeover or Reversing Solenoid
Voltage	24v
Max Load	50A
Terminals	4 x M8 and 2 x M5
Weight	460g
Dimensions	90mm h x 90mm w x 56mm d
Mounting Slots	2 off 7mm h x min 50mm w
IP Rating	Not Waterproof

The information provided in this document is correct to the best of our knowledge at time of printing. However, specifications may change at any time without notice.