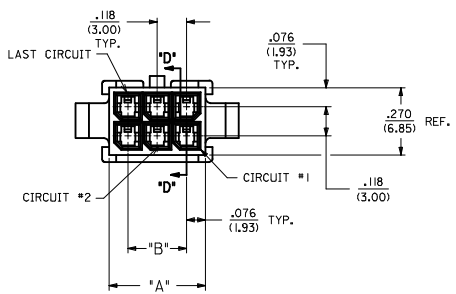
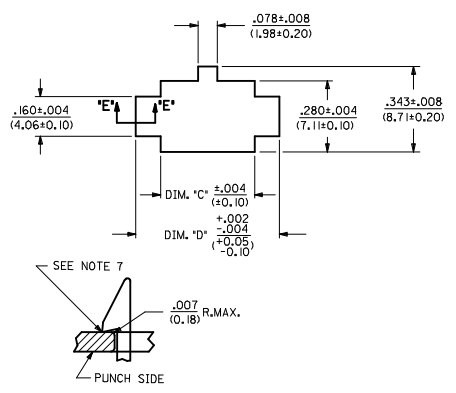


| ASSEMBLY ITEM NUMBER | PART CHARACTERISTICS |                    | MATERIAL |
|----------------------|----------------------|--------------------|----------|
|                      | NUMBER OF POSITION   | PANEL MOUNT OPTION |          |
|                      | 43020-0200           | 02                 |          |
| 43020-0201           | 02                   | NO                 |          |
| 43020-0400           | 04                   | YES                |          |
| 43020-0401           | 04                   | NO                 |          |
| 43020-0600           | 06                   | YES                |          |
| 43020-0601           | 06                   | NO                 |          |
| 43020-0800           | 08                   | YES                |          |
| 43020-0801           | 08                   | NO                 |          |
| 43020-1000           | 10                   | YES                |          |
| 43020-1001           | 10                   | NO                 |          |
| 43020-1200           | 12                   | YES                |          |
| 43020-1201           | 12                   | NO                 |          |
| 43020-1400           | 14                   | YES                |          |
| 43020-1401           | 14                   | NO                 |          |
| 43020-1600           | 16                   | YES                |          |
| 43020-1601           | 16                   | NO                 |          |
| 43020-1800           | 18                   | YES                |          |
| 43020-1801           | 18                   | NO                 |          |
| 43020-2000           | 20                   | YES                |          |
| 43020-2001           | 20                   | NO                 |          |
| 43020-2200           | 22                   | YES                |          |
| 43020-2201           | 22                   | NO                 |          |
| 43020-2400           | 24                   | YES                |          |
| 43020-2401           | 24                   | NO                 |          |

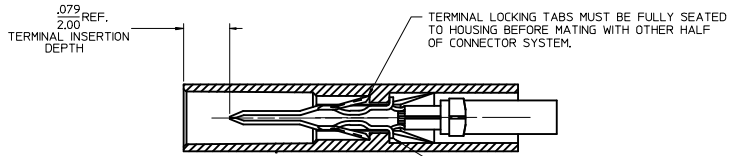
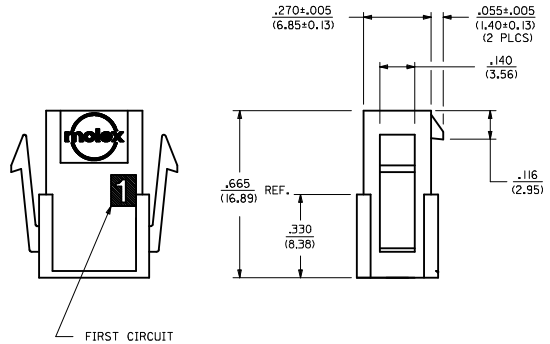
| CKT. NO. | DIM. 'A'      | DIM. 'B'      | DIM. 'C'      | DIM. 'D'      |
|----------|---------------|---------------|---------------|---------------|
| 2        | .152/(3.86)   | N/A           | .166/(4.21)   | .311/(7.90)   |
| 4        | .270/(6.85)   | .118/(3.00)   | .284/(7.21)   | .429/(10.90)  |
| 6        | .388/(9.85)   | .236/(6.00)   | .402/(10.21)  | .547/(13.89)  |
| 8        | .506/(12.85)  | .354/(9.00)   | .520/(13.21)  | .665/(16.89)  |
| 10       | .624/(15.85)  | .472/(12.00)  | .638/(16.21)  | .783/(19.89)  |
| 12       | .742/(18.85)  | .591/(15.00)  | .756/(19.21)  | .901/(22.89)  |
| 14       | .860/(21.85)  | .709/(18.00)  | .874/(22.20)  | 1.019/(25.88) |
| 16       | .978/(24.85)  | .827/(21.00)  | .992/(25.20)  | 1.137/(28.88) |
| 18       | 1.096/(27.85) | .945/(24.00)  | 1.110/(28.20) | 1.255/(31.88) |
| 20       | 1.215/(30.85) | 1.063/(27.00) | 1.229/(31.22) | 1.373/(34.87) |
| 22       | 1.333/(33.85) | 1.181/(30.00) | 1.347/(34.22) | 1.491/(37.87) |
| 24       | 1.451/(36.85) | 1.299/(33.00) | 1.465/(37.22) | 1.609/(40.87) |



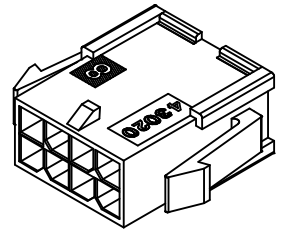
- NOTES:
- HOUSING MATERIAL:
    - 'A' - UNFILLED POLYESTER, RATED UL, 94V-0, COLOR IS BLACK.
    - 'B' - UNFILLED NYLON, RATED UL, 94V-0, HALOGEN-FREE, COLOR IS BLACK.
  - FINISH: N/A
  - PRODUCT SPECIFICATION: PS-43045
  - PACKAGING SPECIFICATION: PK-43020-001
  - THIS HOUSING MATES WITH MICRO-FIT RECEPTACLE #43025-\*\*\*\*
  - THIS HOUSING TO BE USED WITH MOLEX MALE TERMINAL #43031-\*\*\*\*
  - DESIGNED FOR .055(1.4) MINIMUM TO A .100(2.54) MAXIMUM THICK PANEL OR PRINTED CIRCUIT BOARD.
  - SEE SECTION 'D'-D' FOR TERMINAL ORIENTATION IN HOUSING.
  - PANEL MOUNT FEATURES MUST LOCK ON SIDE OPPOSITE PUNCH SIDE FOR OPTIMUM RETENTION.
  - PART CONFORMS TO CLASS 'B' REQUIREMENTS OF COSMETIC SPECIFICATION PS-45499-002. SOME HOUSINGS MAY HAVE A SMALL GATE BLEMISH NEAR THE GATE LOCATION THAT DOES NOT AFFECT FUNCTIONALITY.



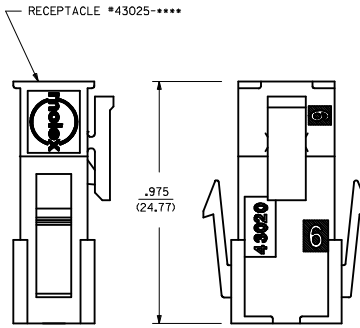
SECTION 'E'-E'  
NO SCALE



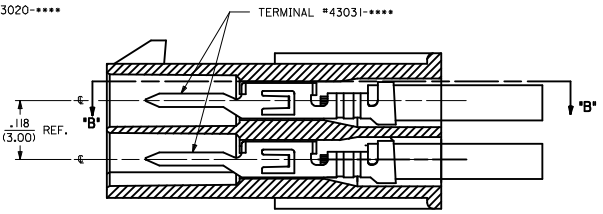
SECTION 'B'-B'



PLUG WITH OPTIONAL PANEL MOUNTS  
ISO VIEW  
(8 CIRCUIT SHOWN)



MATED MICRO-FIT CONNECTOR



SECTION 'D'-D'  
WITH TERMINAL  
SCALE 8X

| UPDATE PUNCHED HOLE |            | QUALITY SYMBOLS               |    | GENERAL TOLERANCES (UNLESS SPECIFIED) |                 | DIMENSION STYLE |       | SCALE      |      | DESIGN UNITS |      | THIRD ANGLE PROJECTION |  |
|---------------------|------------|-------------------------------|----|---------------------------------------|-----------------|-----------------|-------|------------|------|--------------|------|------------------------|--|
| EC NO.              | DATE       | DESCRIPTION                   | mm | INCH                                  | mm              | INCH            | IN/MM | DATE       | DATE | METRIC       | DATE | DATE                   |  |
| 2016/09/13          | 2016/09/13 | CHYKSSOUSEK                   |    |                                       | 4 PLACES ± .010 | ± .010          | AFG   | 1993/01/07 |      |              |      |                        |  |
| 2016/09/13          | 2016/09/13 | CHYKSSOUSEK                   |    |                                       | 3 PLACES ± .010 | ± .010          | BAP   | 1993/01/07 |      |              |      |                        |  |
| 2016/10/07          | 2016/10/07 | APPROV-FSM TH                 |    |                                       | 2 PLACES ± 0.25 | ± .014          | FSM   | 1993/01/07 |      |              |      |                        |  |
|                     |            |                               |    |                                       | 1 PLACE ± 0.35  | ± .014          | FSM   | 2016/10/07 |      |              |      |                        |  |
|                     |            |                               |    |                                       | 0 PLACE ± .010  | ± .010          | FSM   |            |      |              |      |                        |  |
| MATERIAL NO.        |            | ANGULAR ±1/2°                 |    | DRAFT WHERE APPLICABLE                |                 | MATERIAL NO.    |       | SCALE      |      | DESIGN UNITS |      | THIRD ANGLE PROJECTION |  |
| SEE CHART           |            | MUST REMAIN WITHIN DIMENSIONS |    | MUST REMAIN WITHIN DIMENSIONS         |                 | SEE CHART       |       | SCALE      |      | DESIGN UNITS |      | THIRD ANGLE PROJECTION |  |
| G4                  |            | G4                            |    | G4                                    |                 | G4              |       | SCALE      |      | DESIGN UNITS |      | THIRD ANGLE PROJECTION |  |

MICRO-FIT(3,0) 2 THRU 24 CIRCUIT PLUG WITH OPTIONAL PANEL MOUNTS

**molex**

DOCUMENT NO. SDA-43020-\*\*\*\* SHEET NO. 1 OF 1