

Blade Receptacles

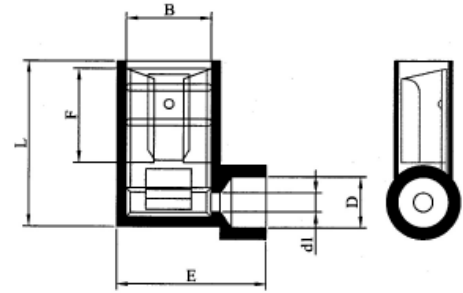


FEATURES:

- Nylon, fully-insulated
- Female disconnect
- Double crimp
- Funnel entry

SPECIFICATION:

Material	Brass
Insulation material	Nylon
Surface material	Tin-plated
Temperature range	max. +105 °C



UL certified: E502428

PRODUCT RANGE:

Article Nr.	Colour	Contact	Cross-Section	AWG	B ± 0.2	F ± 0.3	L ± 1	E ± 0.5	D ± 0.3	d1 ± 0.2
RND 465-00685	Red	6.3 x 0.8 mm	0.5...1.5 mm ²	22-16 AWG	6.6 mm	7.9 mm	16.1 mm	15 mm	4.5 mm	1.7 mm
RND 465-00684	Blue	6.3 x 0.8 mm	1.5...2.5 mm ²	16-14 AWG	6.6 mm	7.9 mm	16.1 mm	15 mm	4.5 mm	2.3 mm

CRIMPING INSTRUCTIONS

