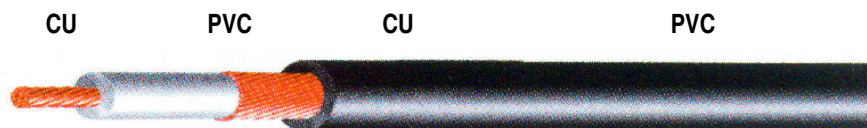


M 1... SP

MICROPHONE CABLE HELICALLY SCREENED



CU PVC CU PVC

A B C D

A	INNER CONDUCTOR	PLAIN COPPER
B	INSULATION	POLYVINYL-CHLORIDE COTTON
C	SPIRAL SHIELD	PLAIN COPPER
D	SHEATH	POLYVINYL-CHLORIDE
	- COLOUR	BLACK - RAL 9004
TAMPERATURE RANGE		-40 °C / +70 °C

MECHANICAL DATA

	INNER CONDUCTOR		SHIELD COVERAGE	SHEATH	WEIGHT KG/KM	
	CONSTRUCTION	SECTION			COPPER	TOTAL
M 1014 SP	12 x 0,12 mm	0,14 mm ²	93%	ø 2,80 ± 0,20 mm	4,3	12,7
M 1022 SP	7 x 0,20 mm	0,22 mm ²	99%	ø 2,80 ± 0,20 mm	5,5	13,7
M 1035 SP	11 x 0,20 mm	0,35 mm ²	88%	ø 2,80 ± 0,20 mm	6,6	14,5
M 1050 SP	16 x 0,20 mm	0,50 mm ²	95%	ø 3,00 ± 0,20 mm	8,5	17,6
M 1075 SP	24 x 0,20 mm	0,75 mm ²	94%	ø 3,40 ± 0,20 mm	11,7	23,3
M 1100 SP	20 x 0,25 mm	1,00 mm ²	91%	ø 3,60 ± 0,20 mm	13,9	26,7
M 1150 SP	30 x 0,25 mm	1,50 mm ²	82%	ø 4,00 ± 0,20 mm	18,3	33,8

ELECTRICAL PROPERTIES at 20°C

	CAPACITANCE		CORES RESISTANCE	VOLTAGE	
	CORE TO CORE	CORE TO SHIELD		OPERATING	TEST
M 1014 SP	-	190 pF/m	122 Ohm/Km	250 Vca	1200 Vca
M 1022 SP	-	195 pF/m	82 Ohm/Km	250 Vca	1200 Vca
M 1035 SP	-	240 pF/m	50 Ohm/Km	250 Vca	1200 Vca
M 1050 SP	-	250 pF/m	39 Ohm/Km	250 Vca	1200 Vca
M 1075 SP	-	310 pF/m	26 Ohm/Km	300 Vca	2000 Vca
M 1100 SP	-	340 pF/m	18 Ohm/Km	300 Vca	2000 Vca
M 1150 SP	-	360 pF/m	12 Ohm/Km	300 Vca	2000 Vca

The producer reserves himself to make modification on the item without any notice.